

CAPACITY BUILDING AND UPSKILLING
(N = 990 PROFESSIONALS)

High quality restorative learning environments

"I appreciated being able to still have access to training through Zoom and that it could still be interactive." (Community Professional)

"I really enjoyed the opportunity to think about my own self-care needs and connect with others in similar roles. We had a wonderful facilitator." (Community Professional)

CERI - Centre for Expertise, Research and Innovation

2,587
Families

521
Professionals

Did you know that ELI has stretched beyond the Docklands? In 2020/21, we supported 20+ other communities across Ireland through

- ParentChild+ National Home Visiting Training, Research and Support Centre
- Sláintecare Integration Fund: Prevention is Better than Cure: A Community Mothers Programme Development Project
- My Place to Play Project
- Rethink Ireland Innovate Fund for the ‘From Couch to Screen’ project
- Home Visiting Alliance

ELI staff presented at 6 conferences

ELI hosted 2 webinars

Volunteers

153
Volunteers



"We were very pleased at how ELI managed to pivot to the virtual world of volunteering so quickly during the pandemic. Our volunteers were delighted to be able to continue to volunteer from home." (Corporate Volunteer)

"Both from a firm perspective and a personal perspective working with ELI is brilliant and seeing the impact that the folks at ELI make is a privilege. We continue to have a big demand from our team to be involved with the ELI, which I think speaks volumes for the work that is being done." (Corporate Volunteer)

Who We Are

ELI enables children, their families and the community, to acquire the skills and self-confidence needed to fully benefit from the education system. We are continually pioneering programmes that aim to address the issue of low educational achievement.

Partner us to expand the minds, hopes and ambitions of this generation, and help them to develop the skills they need for success in education, employment and life.

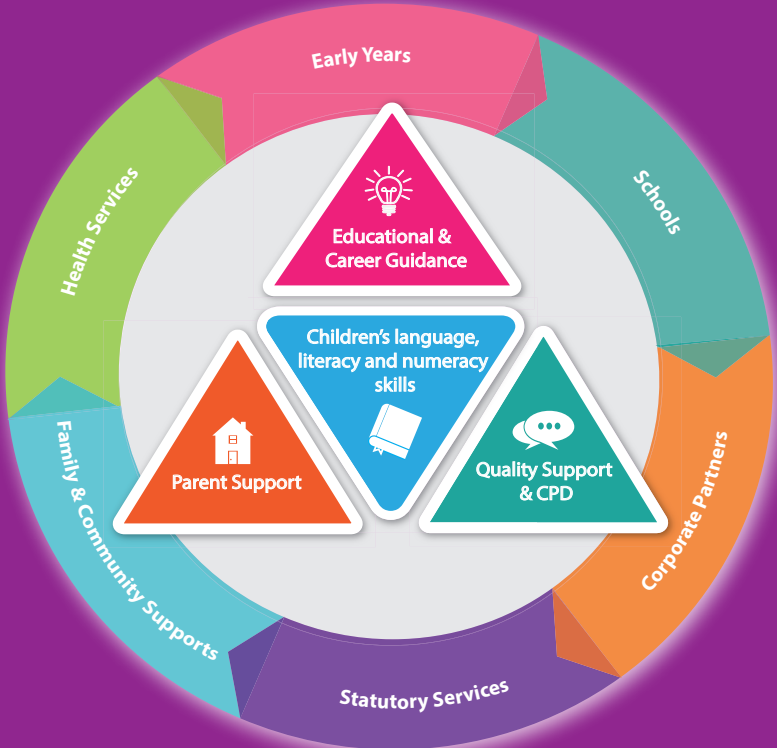
For more information on programmes and supports available in your area, please see below:

Website: www.ncirl.ie/ELI

Email: eli@ncirl.ie

Twitter: @ELI_Docklands

Facebook: www.facebook.com/earlylearninginitiative



To keep in touch with us and see suggested activities, videos and tips for all ages, and access to online groups please Follow, Like & Share us on.

Facebook: www.facebook.com/earlylearninginitiative
Twitter: @ELI_Docklands
Instagram: @earlylearninginitiative
LinkedIn: www.linkedin.com/company/early-learning-initiative



Early Learning Initiative
National College of Ireland

ELI are very thankful as always to our Corporate Volunteers who give their time to support the work we do.

Corporate, government and individual support is fundamental to our success. We wish to thank all of our socially minded corporate, government and individual supporters, including Colin and Nikki Ryan, Joseph E. Corcoran and Keith Ennis, who play such an active role in the advancement of ELI.



Vol 5, Issue 4, September 2021

Early Learning Initiative



Early Learning Initiative
National College of Ireland

Newsletter
Community Update 2020-21



2020/21 was our year of innovation, when using our learning from March 2020, we developed our high-quality responsive hybrid home learning model that supports children and parents in an ever-changing Covid-impacted world. Our evaluations tell us that engagement, satisfaction and learning indicators have risen with children's language, literacies and cognitive skills continuing to improve. While things have been really tough for families last year, it is very encouraging to have so many fantastic partners working with us to ensure that children and young people thrive despite the pandemic.

2020/21 In a nutshell:

- 14,000+ people engaged with ELI's programmes
- 6,000+ families
- 1,400+ professionals
- 4,829 engaged on social media
- 96% (n=1,096) were satisfied with their participation

ELI's home visiting and family engagement programmes continued to provide a critical lifeline in 2020/21. Despite public health risks, society closures, digital divide and missing social safety nets, ELI has continued to grow and expand. We now support 20+ other communities across Ireland. Across the country, virtual 'home visits' via video/phone calls as well as high quality educational materials, online learning activities and socially distanced outdoor visits ensured family well-being, addressed educational divides and prevented developmental delays.

With our support, families did well in 2020/21. However, anxiety about children's educational development remains with most parents not confident home educators. COVID-19 lockdowns highlighted the need for more home-based parent support programmes. Thanks to all the families and volunteers, who over the past year, have trialled different hybrid home-based learning activities. You have helped us to develop our new Stretch Graduate Programme, which will be rolled out next year.

With another challenging year ahead, we are confident that, with support from our wonderful partners, we can continue to provide critical supports during a historical and life-changing pandemic and help thousands of children achieve their long-term educational, career and life dreams.

Our End-of-Year Report 2020/21 is available on our website: www.ncirl.ie/eli. To keep up to date throughout the year, please connect with us on Facebook, Instagram, LinkedIn and Twitter.

Together we are supporting children and families to thrive

ELI would like to acknowledge and thank all our wonderful partners. We look forward to working with you in the best interests of children and families in 2021/22.

- 5,914 children and young people for your enthusiastic active engagement
- 6,683 parents and family members for your inspiring commitment to your children
- 1,356 professionals from community, statutory and voluntary organisations for your dedication and support
- 45 Corporate organisations and Foundations along with 153 volunteers for your sustained investment in children's futures.
- Irish Government for your generous support through the Docklands and East Inner City Area Based Childhood (ABC) Programme, Tusla, Children and Young People's Services Committees, Sláintecare, Rethink Ireland and the North East Inner City (NEIC) Initiative

REG. CHY 9928

www.ncirl.ie/ELI



HOME VISITING AND PARENT SUPPORT (N= 1,743 FAMILIES)

Positive playful home learning environment

ABC 0-2 Home Visiting Programme

"I am incredibly thankful for all your help and support all over these months. It's been an exciting but extremely difficult for me and you have helped me at lot. I will never forget them." (Parent)

132 Families

"New Mummies and babies are very lucky to have you All the Best" (Mother)

1,801 Visits

Home from Home

256 Visits

20 Families

ParentChild+

17,337 Visits

"I'm delighted she is engaging so well and thanks, I just do my best to give her a life I never had" (Parent, PC+ Docklands)

383 Families

"I was worried about my son. He wasn't talking and I had concerns around autism. Since joining the programme he is coming on so well. He is talking and counting. His social skills have really improved. We are currently working on getting him to wait and take turns. He loves his Home Visitor and runs to greet her every time. He goes straight for her bag to see what gift she has for him. I can't thank the programme enough. I'm less worried about his future because I have seen the changes in him in this short time. The changes the programme has made in my son our priceless." [Parent PC+ National]

Groups

248 Families

"I think the class is really good and there is great balance between the facilitators and good interaction with the group"(Dad)

23 Groups

"Coming to group has given me the confidence and reassurance as a first time Mam" (Mother)

RP Parenting

77 Families

"Listening to others and peer support. Also the process of taking time to reflect on our own self care and to value the importance of it." (Parent)

"I found the values in a relationship and why self care and knowing myself can contribute a positive mindset with all the relationships I have (home, work, friendships & other family members)." (Parent)

My Place To Play

780 Parents

She was safe on the floor and I could keep it clean. I liked playing with the toys and watching her following the noise (Mother)

MULTIPLE LITERACIES (N = 2,369 CHILDREN)

Language, literacy, numeracy, social and coding skills

Early Numeracy

1,031 Children

"Being more aware on how to teach them numeracy and positional language." (Parent)

135 Educators

The workshop in itself was useful but sharing with each other ideas of activities and props for delivering the theme is very useful. The toys and books that the centre will get will be very useful in supporting the implementation of the theme throughout the daily activities." (Educator)

Doodle Den

84 Children

"I would like to continue to do Doodle Den online. It is interesting and useful everything you do, my daughter really likes Thank you" (Parent)

"I loved been part of the Doodle Den and would love to do the final session tomorrow thanks so for giving your time to the children see you tomorrow" (Parent)

Zoom Ahead with Books

1,035 Children

"The books were great my son would ask every day did my book come yet. The Christmas one was great as he found it very funny" (Parent from Virtual Book Club)

6,924 Books Read

"I had fun and my mammy made it fun and loved the drawing and picking our favourite page" (Child)

STEM Family Learning and Coding Clubs

60 Children

"I think the whole programme overall was brilliant it's a great idea to keep the children interactive with each other while learning but also having fun aswell. I would recommend the programme to everyone." (Parent)

Language Cafes and Tuition Support

159 Young People

The rotating volunteers was this event's biggest strength, every volunteer leaned towards a different topic so nothing lingered. (Language Cafes Student)

Tutor was very informative and explained everything very clearly. The notes and examples he posted and emailed at end of each class were a great help and a great reference and example for class work in school. The smaller number of students was fantastic too. (Maths Student)

"Because my child would want to study Electrical Engineering in the future, this really helped my son to have a great confidence."(Parent)

EDUCATIONAL GUIDANCE (N= 305 YOUNG PEOPLE)

Educational, career and life aspirations

Educational and Career Guidance

218 Young People

"It was amazing and it was so fun." (Student)

"I learned what subjects I need to study in secondary school."(Student)

"It was a good approach to teaching us about jobs and ways to get to said job, college courses and different paths to take." (Student)



Discover University

29 Young People

"It was fun, I learned a lot about jobs from a day in the life and I learned a lot about how to make a website." (Student)

Restorative Practice with Children and Young People

58 Young People

"I use check-in circles with younger students and it gives them a chance to talk about their feelings and the positives and negatives of school life. They feel they are being listened to and we come up with solutions together to resolve any problems they are having." (Restorative Practices in Classrooms and School Communities – Primary School Teacher)

"I would hope to see more consistency in my own and my organisation's approach, and an acknowledgement that we cannot properly serve the community without achieving and maintaining a good relationship with members of the community. As our service has been severely restricted during this pandemic, to restore the pre-pandemic levels of service and confidence, it will take time and patience, and asking the right questions and actively listening to the answers."

