

## CAPACITY BUILDING AND UPSKILLING (N356 PROFESSIONALS)

High quality restorative learning environments

### Restorative Practice CPD

208 Professionals



“Teacher “I found this course highly useful and practical. The material was helpful. The course was delivered in a great way. The staff were highly knowledgeable and always available for comments and questions. I will be more confident in implementing RP in my own school and daily life.”



“Community Professional “I think [restorative practice] is a great way to help prepare children and staff to engage in their day to day lives in a much more positive and calm way.”

### Numeracy CPD

33 Educators

“Gaining new ideas. Learning new ideas from other people.”

“Understanding more on numeracy.”

“Loved the videos. The discussion centred on our practice in class and not too heavy ( Very important after a long day)”

### RP Parenting, Self Care and Emotional Literacy CPD

88 Parents

RP Parenting : “Recognize ways of dealing with situations differently i.e. how to speak to my child and understand how he might feel”

Self Care CPD: “I really enjoyed the meditation as I was feeling very overwhelmed between work life balance. I feel grounded after it.”

Emotional Lit CPD: “Thinking about my own approach to feelings and how that impacts my responses in my DP setting.”

### Volunteers

230 Volunteers



“It was great to do something rewarding during the work day. Gives a sense of reality to the stats we are bombarded with on social issues.”

“It helps break the ‘us and them’ barriers between the ‘haves’ and ‘have nots’ in the Docklands area. It lets the children see that we’re all just people even though they may see us as different.”

12 Projects and Events

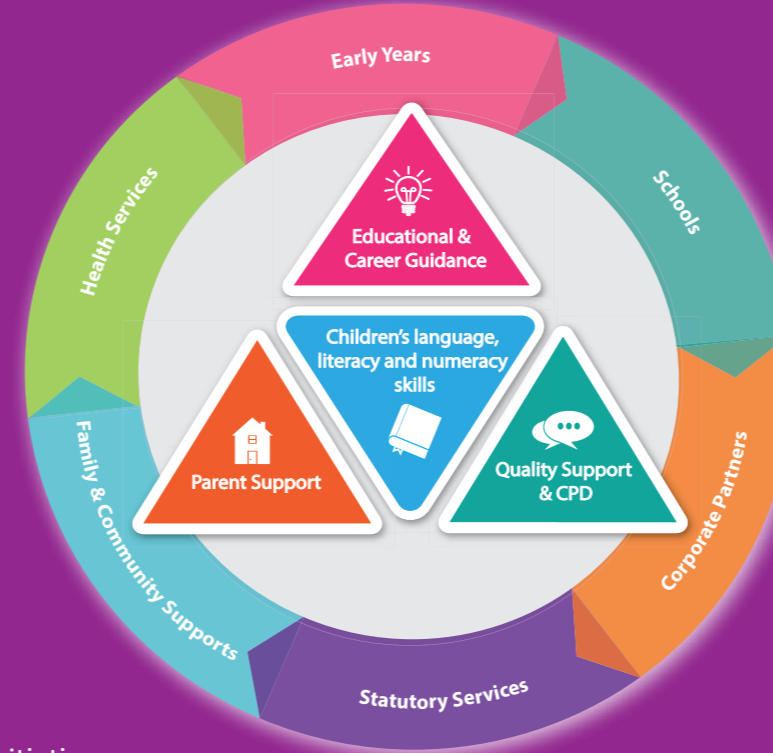
# Who We Are

ELI enables children, their families and the community, to acquire the skills and self-confidence needed to fully benefit from the education system. We are continually pioneering programmes that aim to address the issue of low educational achievement.

Partner us to expand the minds, hopes and ambitions of this generation, and help them to develop the skills they need for success in education, employment and life.

For more information on programmes and supports available in your area, please see below:

Website: [www.ncirl.ie/ELI](http://www.ncirl.ie/ELI)  
Email: [eli@ncirl.ie](mailto:eli@ncirl.ie)  
Twitter: @ELI\_Docklands  
Facebook: [www.facebook.com/earlylearninginitiative](http://www.facebook.com/earlylearninginitiative)



## Early Learning Initiative National College of Ireland

Corporate, government and individual support is fundamental to our success. We wish to thank all of our socially- minded corporate, government and individual supporters, including: Dermot Desmond, Joseph E. Corcoran, Colin and Nikki Ryan, Keith Ennis and The Winifred Garvin Fund, who play such an active role in the advancement of ELI.



Vol 5, Issue 1, September 2020

## Early Learning Initiative

# Newsletter Community Update 2019-20

In a year like no other, children are and will remain our priority. A huge thank you to everyone who helped support children's wellbeing, education and health over the past year, particularly from March onwards. Moving from face-to-face couch/floor/classroom visits to video calls/social media and physically distanced outdoor visits was challenging but

### We did it!!!

- 3,300 video home visits were made between March and June 2020
- 1129 activity packs and My Place to Play mats were delivered to families
- 472 families attended online groups
- 3,953 engaged on social media

We are delighted that while engaging young children remotely is difficult, families have been really committed to continuing the activities between calls as this example from a Home Visitor shows: “One of the children who has speech difficulties has started saying lots of new words. The child has been spending lots of time with his older brother who has been really patient with him. The Mam said that both she and her son have been modelling what I [Home Visitor] have been doing on the video sessions and repeating all the words to him and positively praising him. She is thrilled and looks forward to each video call to show me what new words he is saying.”

Messages from families and professionals tell us how important this support has been to them in these difficult times. Hearing from parents how their children said their first sentence, walked their first step, read their first book, drew their first picture and wrote their first word have been beacons of light in the midst of the pandemic.

With a challenging year ahead, we believe that our high-quality responsive hybrid programmes will support children and young people bridge the educational/digital divide and thrive in this new era of COVID-19. Developing our knowledge, skills and capacity in eLearning and social media will be key. With the goodwill, enthusiasm and determination of our fantastic partners, we can ensure, in spite of COVID-19, that our children and young people will have the hope, confidence and skills to achieve their dreams.

Our End-of-Year Report 2019-20 is available on our website: [www.ncirl.ie/eli](http://www.ncirl.ie/eli). To keep up to date throughout the year, please connect with us on Facebook, Instagram, LinkedIn and Twitter.



*Ni neart go cur le chéile. Together we will overcome the challenges of COVID-19.*

ELI would like to acknowledge and thank all our wonderful partners. We look forward to working with you in the best interests of children and families in 2020/21.

- **5,712 children and young people** for your enthusiastic active engagement in ELI's Home Visiting, Literacy, STEM, and Educational Guidance Programmes. You motivate us all.
- **5,782 parents and family members** for your dedication, goodwill and resilience in the face of a pandemic. Your love, care and interest in your children shone through as you sustained a positive home learning environment during COVID-19, where you talked, read and played with your children every day. Your commitment to ensuring that your children have the best start in life is inspiring.
- **811 professionals** from community, statutory and voluntary organisations for your ongoing involvement and support, particularly during the pandemic when we worked together to ensure that all families got the help needed to support their children's learning.
- **Community, statutory and voluntary organisations** for sharing with us your commitment to and expertise on improving outcomes for children, young people and their communities.
- **42 Corporate organisations and Foundations** along with 273 volunteers for investing in children's futures. You have and are continuing, despite Covid-19, to make a real positive difference in the lives of so many people.
- **Irish Government** for your ongoing sustained support and interest in helping ELI improve children's lives and create a brighter future. Your continued commitment through the Docklands and East Inner City Area Based Childhood (ABC) Programme (Department of Children and Youth Affairs and Tusla) and the North East Inner City (NEIC) Initiative helps families bridge the educational and digital divides and creates an excitement about education in family homes.



## HOME VISITING AND PARENT SUPPORT (N=2,420 FAMILIES)

Positive playful home learning environment

### 0-2 Home Visiting Programme

Won Irish Healthcare Centre Awards, under the category Healthcare Initiative Project Child Health and Wellbeing.

"I think it is a great idea to have someone visiting you regularly at your own home and participate in the development of your child. Especially when this is one particular person who sees him weekly. My Home Visitor was super-engaged even in time of COVID and I could always reach her on the phone."



"The programme is tailored to your babies needs. My Home Visitor understands that we are working on my son's speech. She organises activities around speech such as using bubbles and songs. Also if he makes noises she acknowledges his noises and talks back to him."



**134** Families  
**27** garden visits in June  
**908** face-to-face visits until 12th March 2020

### ParentChild+ Docklands

"The Programme is an excellent resource for both children and parents. The toys and books are all educational and some are timeless. Thank you for an amazing experience"

**22** Home From Home Families across 11 emergency accomodation services

"Our spirits were lifted after the calls every week"



**173** Parent Child+ Families

**2631** home visits (Pre Covid-19)

**185** Activity Packs delivered for PC+ children and their siblings



"I can still remember the day when my little one got the activity pack from ELI, how excited he was. In this special time, it means a lot to us."

### ParentChild+ National

**203** Families  
**9** Sites

"I learned to start trusting someone else with my child and to lower/relax my expectations, this will get me ready for playschool, nevermind my son!"



### Parent Support Programme

"The engagement with the ladies who run the group and the people who come to groups. How they have to go online and adapt has been outstanding as I thought the groups would stop"



**8** Summer Programme events with **388** children & parents

## MULTIPLE LITERACIES (N=2,819 CHILDREN)

Language, literacy, numeracy, social and coding skills

### Early Numeracy

**1265** Children

"Helped my child see how many ways numbers are in everyday life in lots of different ways"



"It made me aware of how easy it is to get the children to listen when they are interested in something."

### Doodle Den

**47** Children



"The best thing about the Doodle Den programme is that there is no other like it. It is an amazing programme that focuses wholly on children's' literacy in the most creative ways"



### Zoom Ahead with Books

**1101** Children



"There are so many positive outcomes from the programme. The interest in reading is obviously the main one but other literacy areas such as recap, sequencing, scanning, predicting and sharing all of this information with peers is what I notice most in the classroom. The children are having conversations about their books with no input from parents and teachers." (Educator)

**7,347** Books Read



"We really enjoyed the drawing after the story was finished. We then had lots of discussion with open ended questions. Also myself and my husband took turns each night." (Book Buddy)

"My intention was to give my time and add something to the children's lives, however it soon became clear that they were adding something to mine! It was a truly uplifting experience." (Corporate Volunteer)

### NCI Challenges

"The planning + organization of events and meetings with the school really enhanced the programme. The team really benefit the lives of these children. Its a great initiative for all involved"



ELI do a wonderful job in a very imperfect environment. Keep up the good work"

**496** Children



"It was fun! I love the challenge and I won"

### ELI Afterschools Coding Club

**202** Children



"I liked that it inspired us and it made me think of my future job."

"it was the most fun thing I've had in a while."

"The kids were really keen to participate and learn from us. Great having knowledgeable supports from NCI experts to support this learning for both us volunteers and the kids."



## EDUCATIONAL GUIDANCE (N=473 YOUNG PEOPLE)

Educational, career and life aspirations

### Educational Guidance

**128** Young People

"I think the programme was great, it improves searching skills and teamwork. I really enjoyed the programme. (Student)"



### Educational Guidance Second Level

**108** Young People

"talk[ing] to people about their jobs and experiences in life"



### A Day in the Life Events

**83** Young People

"The best thing about the programme was that I got to talk to people about their jobs and experiences in life. (Student)"



### Discover University

**41** Young People

"I'd definitely say that in trying a virtual format and changing things, although it was new, it all managed to work well for it! While there were some unavoidable technical hiccups sometimes, it was evident that there was a lot of things put in that gave a similar experience as normal Discover University, such as the Breakout Rooms, Physical Activities, Virtual Tours, Lectures and meeting others!." (Student)

### Language Cafes

**20** Young People

"The 10 minute rotation was brilliant allowing students to practice with a number of different speakers and accents. (Teacher)"

### Tuition Support

**27** Young People

"I really enjoyed being able to pick what topics I would want to revise. The preparation was great as it helped the class be prepared. Overall everything was excellent". (Student)

### Third Level Internship

**4** Young People

"Everything about the internship was brilliant and rewarding. The highlights would have to be participating and helping out all the local schools in the table quiz weeks." (Intern)

### Restorative Practice with Children and Young People

During 2019/20 there were: Peer Mentoring (Relationship Keepers, RP Buddies etc.), Opening the Door Between Corporate and Community, and Discover University opportunities.

Young Person participating in Opening the Door "[Having taken part, we'll feel] sad when it's over. Happy because we learnt new things. Energised. Full of pizza (I had four slices)."

**87** Children & Young People



Community Professional "[Restorative practice will] help young people to understand and express their emotions in a comfortable and safe environment."

Corporate Volunteer: "I think the benefit is that the kids get to meet lots of different people, with different personalities, that look different and have different jobs and yet our common ground is that we all work really well together and that we value each other's differences."