

CAPACITY BUILDING AND UP-SKILLING (N=635 PROFESSIONALS)

High quality restorative learning environments

Restorative Practice CPD (N=527 Professionals)

527

Professionals

I will be able to implement RP chats, meetings, circles and conferences as appropriate with the young people I work with to repair harm but also to evaluate groups, celebrate successes, build stronger relationships.

Numeracy CPD (N=33 Educators)

33

Educators

ELI provides space for us to think about our work and how we can improve it.

Self-care and Emotional Literacy CPD (N=63 Professionals)

63

Professionals



Self-awareness, be present, prioritising, boundaries, take breaks, connection and sense of belonging, purpose... those topics make me understand myself better

Conferences (N=146 Professionals)

146

Professionals

Hearing the practical aspects of how people are responding to the developments/changes in our world and how they are implementing this in their respective projects and counties



Volunteers (N=375 Volunteers)

375

Volunteers



When I met the lads outside at a football match they initiated contact - were polite and courteous and saw me as a "normal" person who they could share their day with. So happy!

16

Projects and Events



Thank you to all the ELI team for the work you do. It's a pleasure to contribute in a small way as a volunteer.

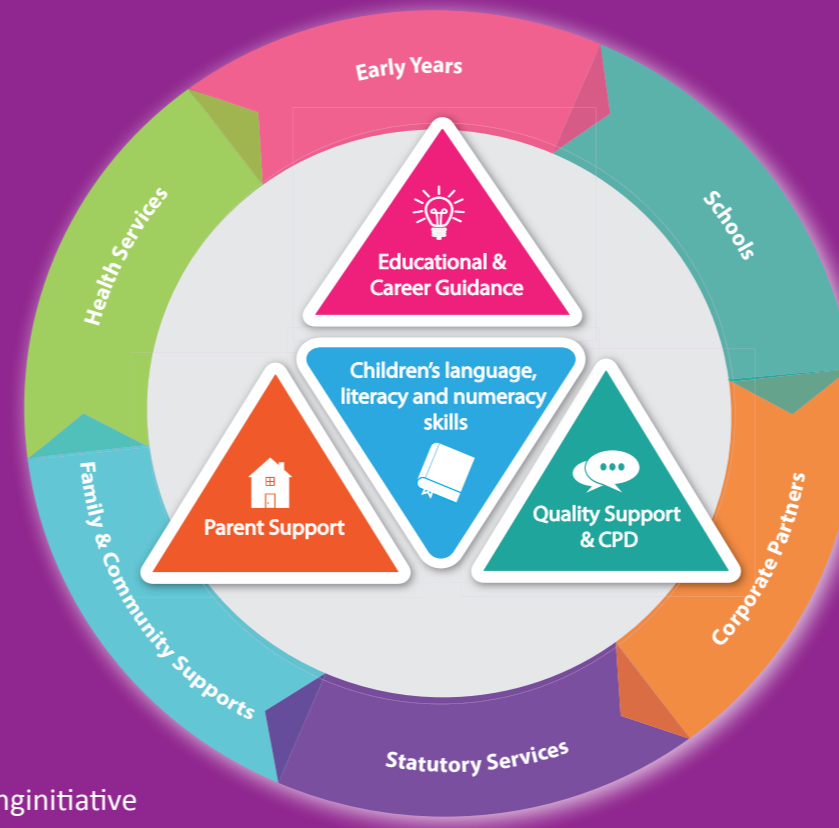
Who We Are

ELI enables children, their families and the community, to acquire the skills and self-confidence needed to fully benefit from the education system. We are continually pioneering programmes that aim to address the issue of low educational achievement.

Partner us to expand the minds, hopes and ambitions of this generation, and help them to develop the skills they need for success in education, employment and life.

For more information on programmes and supports available in your area, please see below:

Website: www.ncirl.ie/ELI
Email: eli@ncirl.ie
Twitter: @ELI_Docklands
Facebook: www.facebook.com/earlylearninginitiative



Vol 3, Issue 12, September 2019

Early Learning Initiative

Newsletter

Community Update 2018-19



Imagining the Future! As a new decade begins, ELI has been busy reflecting on the past; planning the future along with delivering programmes to 11,000+ children, young people, parents and professionals. While some things change, ELI's vision of children and young people having the language, social, literacy and numeracy skills for success in education, career and life remains. Thank you for your support over the past decade and we look forward to sharing our 2020-25 Strategy in Spring.

2018-19 saw the smooth transition of the Government's Area Based Childhood (ABC) Programme into Tusa's Partnership Prevention and Family Support (PPFS) Unit. The commitment from the Government, in particular the Department of Children and Youth Affairs, to the ABC Programme is very heartening.

The ABC National Evaluation (CES 2018) found that it made a positive and significant contribution to improving outcomes for children and families, in particular, child-parent relationships; children's learning and school readiness; and children's social and emotional well-being. It also found that the home learning environment for children in the Dublin Docklands and East Inner City had improved significantly. These findings affirm and support ELI's own evaluation processes and data analysis.

Home Visiting and Parent Support Programmes grew last year with the addition of Restorative Practice Parenting Courses; Home from Home Transition Programme and more ABC 0-3 years Groups. Our ABC 0-2 Programme were finalists again this year in the Irish Healthcare Awards with our Healthy Ireland My Place to Play Programme, which was a wonderful collaborative initiative between North Dublin Children and Young People Services Committee (CYPSC) and the ABC areas. PCHP is now ParentChild+ and is being delivered in 7 areas in Dublin, Galway and Limerick.

Educational Guidance and Support Programmes also grew last year with expansion of the Robotic Coding Clubs, Restorative Practice Opening the Door, Upskilling and Train the Trainer along with the addition of Language Cafes, A Day in the Life and Emotional Literacy training

As you are aware, ELI constantly evaluates its impact. In 2018-19, satisfaction rates remained high at 96% across all programmes. Children's oral language, literacy, numeracy, social and coding skills continue to improve and their aspirations for the future have never been higher. With our first PCHP children in secondary school, we are looking at ways to support them to continue to third level and beyond.

Our End-of-Year Report 2018-19 is available on our website: www.ncirl.ie/eli. To keep up to date throughout the year, please connect with us on Facebook and Twitter.

Thank You

ELI's partners are its greatest asset. Without their long-term valuable support, much of the ELI's work would not be possible. Together we are changing lives through education. ELI would like to acknowledge and thank all who supported us over the past year and we look forward to working with you in 2019/20.

- **Children and young people** for your enthusiastic active engagement in ELI's Literacy, Numeracy, Robotic Coding, Educational Guidance and Restorative Practice Programmes
- **Parents and family members** for talking, reading and playing with your children every day. Your dedication to ensuring that your children will have the best start in life is inspiring.
- **Services and schools** for your ongoing involvement in ELI Programmes. Your goodwill, resilience and support in proactively improving the educational, career and life chances of children and young people are greatly appreciated.
- **Community, statutory and voluntary organisations** for sharing with us your commitment to and expertise on improving outcomes for children, young people and their communities.
- **Corporate partners and volunteers** for investing in ELI and supporting us to build a high-achieving cohesive community. We applaud your genuine commitment to making a real, measurable and positive difference to the lives of children and young people in the area.
- **Government** for your continuous support and interest in helping ELI address key educational and social issues in the communities in which we work. We are delighted to see the continued commitment from the Government and the Department of Children and Youth Affairs to both the Docklands and East Inner City Area Based Childhood (ABC) Programme and the North East Inner City (NEIC) Initiative.



Early Learning Initiative National College of Ireland

Corporate, government and individual support is fundamental to our success. We wish to thank all of our socially-minded corporate, government and individual supporters, including: Dermot Desmond, Joseph E. Corcoran, Colin and Nikki Ryan, Keith Ennis and The Winifred Garvin Fund, who play such an active role in the advancement of ELI.



REG. CHY 9928

www.ncirl.ie/ELI
f t

HOME VISITING AND PARENT SUPPORT (N=1,230 FAMILIES)

Positive playful home learning environment

0-2 Home Visiting Programme (N=108 Families)



"I think it's important to have someone to talk with especially when you are a new mother and in the house all the time. It gives you some interaction, encouragement and you can talk about everything. It's nice to have someone."

"The visitors experience and wisdom is so encouraging. I feel like my own approach is validated and boosted by her. She makes us confident and happy."



Parent Child Home Programme (PCHP) (N=194 Families)



"Everybody has so much time for you and your child. They are so professional, reliable, consistent, supportive, informative and understanding. My child has been part of ELI programmes since he was a few weeks old. The support I received has been amazing and to be honest my journey as a mother would not have been the same."



"My experience with the Home Visitors was that they were very professional and focused on the child. The activities were age appropriate and if our visitor felt she was a little advanced for the activity the activity was adapted to suit where possible."



Parent Support Programme (N=752 Families)

"Excellent group, has made a huge difference to my skills and child's learning. I have already recommended to two friends. The facilitators are excellent, caring, supportive and helpful. They make the groups feel welcomed and supported. I really look forward to Friday group. They have been one in a million, would highly recommend"

"It was a real highlight of our week. Really developed great friendships between mams and babies. Loved it! Thank you!"



MULTIPLE LITERACIES (N=3,459 CHILDREN)

Language, literacy, numeracy, social and coding skills

Early Numeracy (N=1,934 Children)

"The children had fun and learned at the same time."



"It made me aware of how easy it is to get the children to listen when they are interested in something."

Doodle Den (N=48 Children)

I cannot fault the programme in any way. I have a very honest, outspoken child who came and pleaded with me to join Doodle Den. It was the best decision I have made as my child matured since joining. Teachers are fantastic and very understanding. She has never once asked can she skip a day and that is saying a lot.



My daughter's confidence around reading and writing has greatly improved. She has really enjoyed attending.



Zoom Ahead with Books (N=196 Children)



"It was amazing to have a set of colour pencils, and this took a lot of stress out; book, paper and pencils all ready to go. The kids can pick 'their' book which increases the joy. Both parents work fulltime - homework is done with afterschool care usually. This helped to get in touch with child's learning and thinking and approaching problems and level of skills."

7,464+ Books Read



"Huge parental involvement in the school. Children who weren't doing homework before are doing it now. Pictures mean literacy accessible for all families. Packs are brilliant."



NCI Challenges (N=192 Children)

That I learned a lot of things.



I liked that you are a team and you get to help everybody on your team.

ELI Afterschools Coding Club (N=102 Children)

My child will have the option to study in a science field if they choose."

"STEM is becoming more important in everyday life and is used more often in education."



EDUCATIONAL GUIDANCE (N=449 YOUNG PEOPLE)

Educational, career and life aspirations

Educational Guidance (N=291 Young People)

"All of the activities were well suited to the age group of the children. Expectations for the children's projects were clearly communicated. I thought this was brilliant as it got the children ready for doing assignments in secondary school where they will have to follow a set of criteria. Resources provided were brilliant and allowed the children to produce high standard projects. The trip to the port was fabulous. The judges coming in for the feedback session was really good. I feel it finalised the project very well and gave the children confidence in themselves."

Each visit my child would come home and when you would ask how his day you would hear 'Awesome!' not the usual 'fine'.



Restorative Practice (N= 110 Young People)

110 Children & Young People



Young People's Comments:

from different backgrounds, cultures etc. that they wouldn't normally be exposed to. It gave them an insight into the corporate world and an understanding of how it works. - youth leader



Restorative practices helped us come to an agreement about what our computer game should look like without shouting at each other. We took turns giving our opinion and tried to be fair when making our decision. It helped us to work better as a team. - young person

